

2-Wire Cable Tester

8740N/ 8740NA/ 8740FA

Features

- Test pin 128/256/512
- Number of test file up to 500 sets
- The measurement items: Open/Short, Conductance, Components, AC Hipot, DC insulation/Hipot, Quick conductance, Intermittence O/S, and Quick Intermittence open circuit.
- Multiple DUT test-4 (standard)/expand 14 (option)
- USB Host storages setting files and can update firmware
- Support bar code scan and print function
- External current expand box for wire buck measurement

Application

All kinds of wires, connectors and combined products of connectors and wires



CE RS-232 Remote USB Host Print

Accessories / Fixtures

Standard

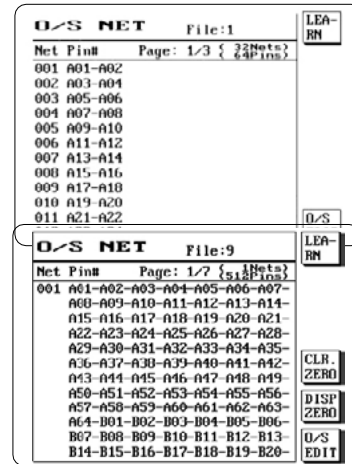
- Power Cord
- AK-8600F2-8740FA
- 8730-J2
- Probe

Optional

- PC link software
- Remote control cable
- KB-8730K1
- F874003
- F874001
- FX-000C15
- FX-000C16
- FX-000C18
- FX-000C21 (USB Type A)
- FX-000C22 (USB Type C)
- FB-8600M1
- Networking Fixture
- D-Sub foot switch (F760001)
- Printer

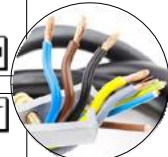
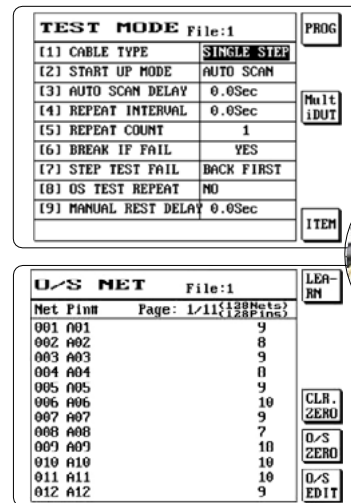
Key Features

A Open/Short Test



Open/Short Test: Make sure the contact of wire work properly.

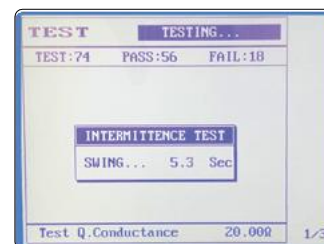
B Single Step



SINGLE SIDE: Without probe, use capacitor directly to judge the point with wiring.

SINGLE STEP: Using a probe, measure the connected pin.

C Intermittence Test



The Intermittence test function is swing test. Setting test time in seconds, the cable tester will continuously scan within the set time to perform a short-circuit judgment test.

Specification

Model Name	8740N	8740NA	8740FA
Measuring Mode	2-wire		
Test Pin	128/256/512	128/256/512	128/256/512
AC Output Voltage	-	100-700V	100-1000V
DC Output Voltage	50-1000V	50-1000V	50-1500V
Hipot Output Accuracy	±5%		
Hipot Measurement Accuracy	±5%		
Rated Output	5Vdc		
Hipot Measurement Time	0.01s		
Wire Specifications	Maximum allowable capacitance 5μF		
Measurement Items and Measurement Range	Cond. Resistance		100mΩ-52Ω
	Intermittence Cond. Resistance		100mΩ-52Ω
	AC Hipot Leakage Current		0.01mA-5mA
	DC Hipot Leakage Current		0.1μA-1000μA
	DC Hipot Insulation Resistance		1MΩ-1GΩ
	O/S, Intermittence O/S, Quick Intermittence open circuit		1kΩ-100kΩ
	Resistance	Measurement Range	100mΩ-2MΩ
		Level signal	Fixed 2.4V
	Conductance	Current signal	30mA
		Measurement Range	10pF-3μF
	Capacitance	Frequency signal	AUTO Gear (Optional) 48Hz/480Hz/4.8kHz/48kHz
		Level signal	Fixed 1.2V
		Diode	0-7V
Single-Side Test	Able to do the Single-Side Test		
O/S Terminal Judge	With this feature		
Advanced Functions	Programmable continuous test / Pin search / Auto-diagnosis		
Test Scan Mode	Auto, Manual, External Trigger		
Measurement Signal	Low Voltage Measurement Signal		
Built-in Storage	Number of test file up to 500 sets		
Indicator	Pass/Fail HV LED red-green indicator lights / Screen Display / Sound		

General

Power Supply	Fixed Voltage 115/230 Vac ±10%
	Frequency 60/50Hz
Power Consumption	8740(128)- 70VA, 8740(256)- 100VA, 8740(512)- 150VA
Interface	RS-232, USB Host, Print, Remote
Operation	Manual, Auto, Remote Control
Display	320*240 dot-matrix
Environment	Temperature: 15°C-35°C, Humidity: RH≤70%
Dimension (W*H*D)	8740 (128): 435×145×406mm 8740 (256): 435×145×406mm 8740 (512): 435×190×406mm
Weight	8740 (128): 8.44kg 8740 (256): 9.3kg 8740 (512): 14kg